



**“Future-Proofing Australia’s Pipelines
with Advanced Trenchless Innovation”**





“Delivering certainty, safety, and sustainability for Australia’s pipelines.”

Future Proofing Infrastructure

Mullane Trenchless (MTPS) safeguards Australia's critical infrastructure through **advanced trenchless technologies** that repair, renew, and future-proof water, wastewater, stormwater, and pressure networks.

With world-first innovations like the UVX AIR LED UV curing system, Mullane **delivers faster, cleaner, and more sustainable outcomes** — minimising disruption, reducing carbon impact, and **extending asset life**.

Who We Are

At Mullane Trenchless, we are more than a contractor; we are a trusted partner in building and protecting resilient infrastructure. Our teams combine engineering precision, trenchless expertise, and uncompromising safety standards to deliver outcomes that councils, utilities, and Tier 1 contractors can depend on.

We believe the strongest projects are built on trust, collaboration, and innovation. That's why our people are chosen not only for their technical skill but for their ability to work seamlessly with clients, consultants, and communities.

Living the MTPS philosophy is straightforward: ***do what you love with people you value, while making a difference.*** This mindset drives our teams to solve complex challenges, deliver exceptional results, and contribute to a sustainable future.



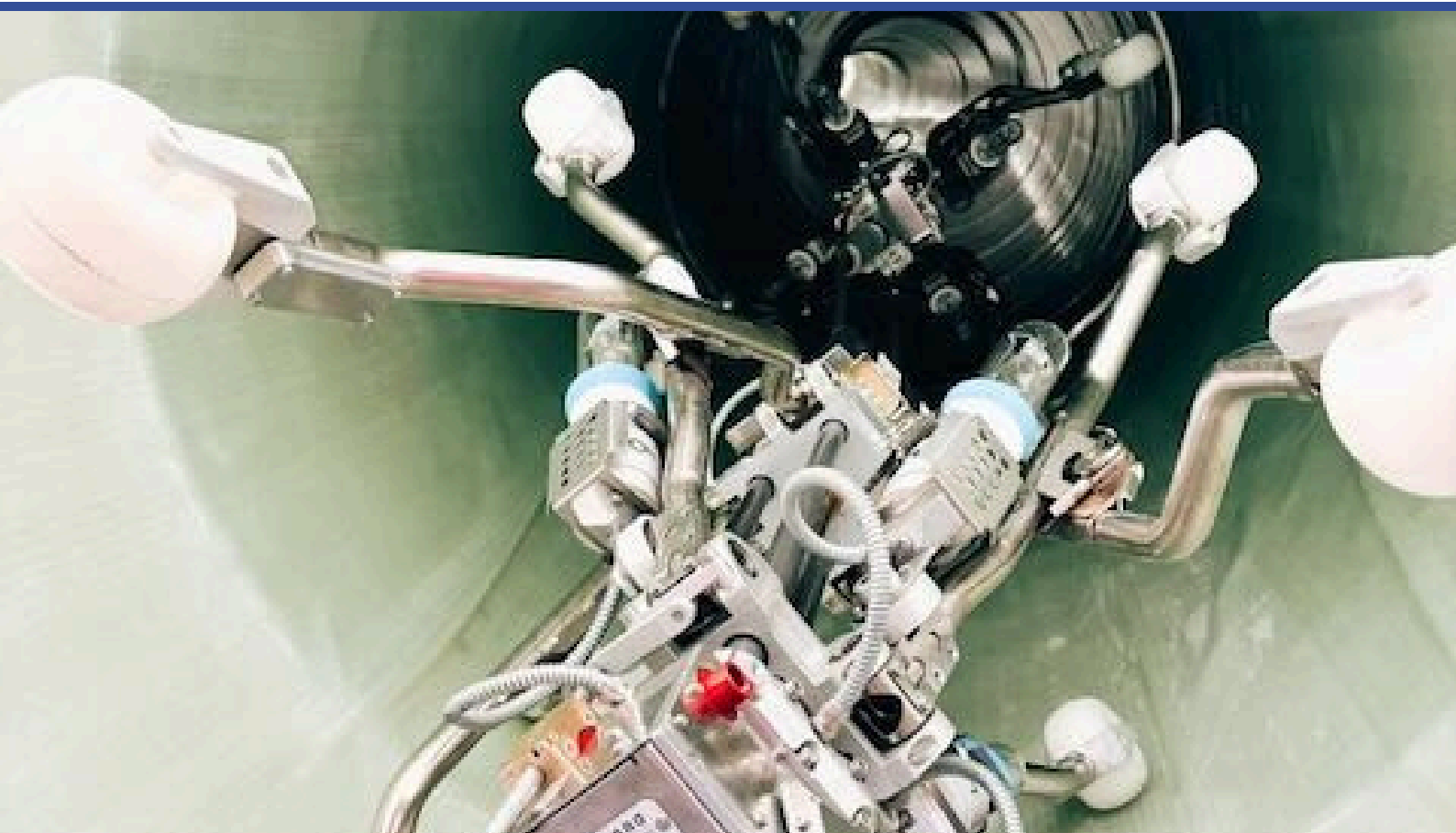
What We Do

Mullane delivers a ***complete suite of trenchless solutions to repair, rehabilitate, and renew critical pipeline assets***. Our services cover the entire asset lifecycle — from diagnosis and inspection, through to robotic preparation, high-pressure cleaning, and world-leading lining technologies.

Our approach ensures:

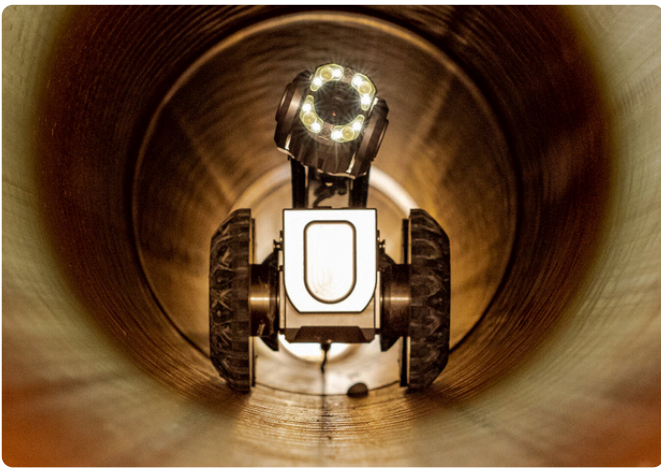
- ✓ The right solution for each asset condition
- ✓ The lowest possible disruption to communities and operations
- ✓ Sustainable methods that reduce carbon footprint and extend asset life
- ✓ Best-value outcomes for long-term asset management

*“Whether the challenge is a council stormwater trunk main, a utility wastewater rising main, a Tier 1 contractor’s road crossing, or a small-diameter lining project in universities, hospitals, or schools, Mullane delivers trenchless outcomes with **certainty, safety, and speed**; no matter the scale or complexity.”*



SOME OF OUR CLIENTS



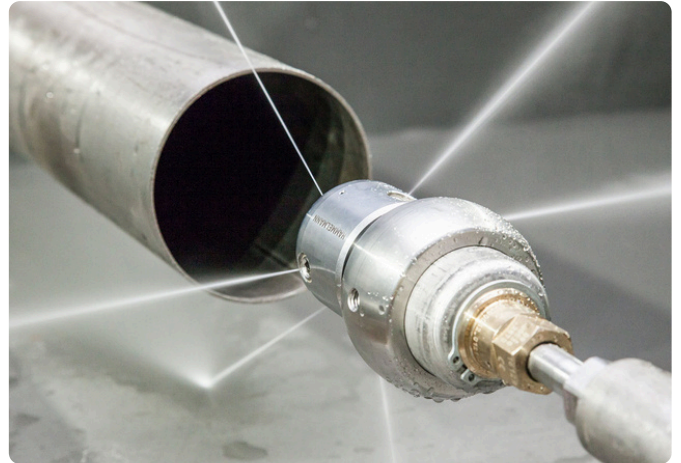


CCTV INSPECTIONS

- ✓ Push-rods, Crawlers & Drone Inspections
- ✓ **DN100 to DN2000**
- ✓ Wincan Reporting
- ✓ WSAA Accredited Operators & Coding
- ✓ Condition Assessments
- ✓ Sign-off Inspections
- ✓ **Clarity, Efficient, Precise, Proactive**

DRAIN & PIPE CLEANING

- ✓ High-Pressure & High-Speed Cleaning
- ✓ **DN100 to DN2000**
- ✓ Versatile: Roots, Grease, Scale, you name it!
- ✓ Environmentally friendly, using water only.
- ✓ Deep cleaning as a result of high-pressure
- ✓ **Thorough, Speed, Safe, Economical**



ROBOTICS

- ✓ Robotic Cutting and Grinding
- ✓ **DN100 to DN1050**
- ✓ Concrete & Rebar
- ✓ Calcified Deposits & Tree Roots
- ✓ Old Liners & Protruding Laterals
- ✓ **Precise, Fast, Safe, Cost-Efficient**

DRAIN PATCHING

- ✓ Leak-Tight Silicate Drain Patching
- ✓ **DN100 to DN1800**
- ✓ Sewer and stormwater drains
- ✓ Localised Point Repairs
- ✓ Amex Seals, Tube Patch, Glass Patch
- ✓ **Strength, Speed, Precise, Adhesion**





UV LINING

- ✓ UV Cured Glass-Reinforced Liners
- ✓ **DN150 to DN2000**
- ✓ Pit-to-Pit lining
- ✓ Sewer, Stormwater, Culverts
- ✓ Straight Lines & soft bends
- ✓ Up to 200m installation length
- ✓ **Fast, Efficient, Safe, Sustainable**

CIPP LINING

- ✓ UV LED Cured Inversion Lining
- ✓ **DN70 to DN300**
- ✓ Glass-Reinforced & Felt Liners
- ✓ Sewer & Stormwater Drains
- ✓ Multiple Bends & Long Lengths
- ✓ Single access-point installation
- ✓ **Adaptable, Strong, Economical, Reliable**

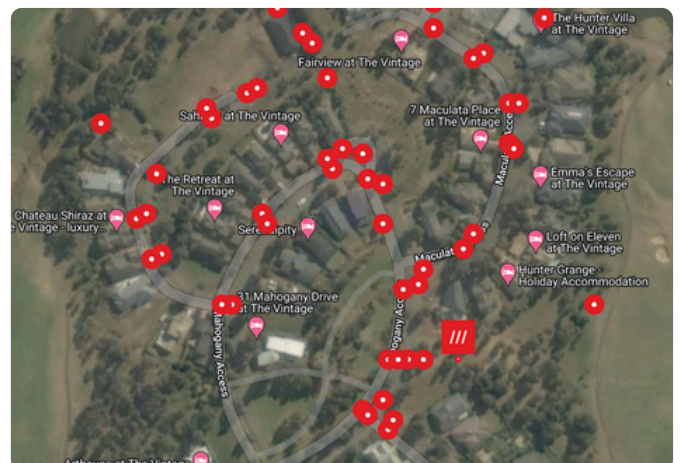


PRESSURE LINING

- ✓ High-Pressure Lining Technology
- ✓ **DN050 to DN1200**
- ✓ Water & Fire Mains
- ✓ Sewer Rising Mains
- ✓ Oil, Gas, Mining, Agriculture
- ✓ Long-length installations (+1km)
- ✓ **Resilient, Versatile, Precise, Longevity**

ASSET INTELLIGENCE

- ✓ Locating, tagging & mapping of assets
- ✓ Tag any asset anywhere in the world
- ✓ Pinpoint precise location of each asset
- ✓ Navigate to asset via maps
- ✓ Asset locations tagged to Wincan reports
- ✓ **Accuracy, Simplicity, Scalability, Traceability**









Mullane
TRENCHLESS PIPELINE SOLUTIONS

